



New England School Development Council

**Cape Elizabeth School Department
Cape Elizabeth, ME**

School Year 2024-25 Enrollment Projection Report

Copyright, New England School Development Council, 2024

Table of Contents

Section	Page
Enrollment Summary.....	1
Historical Enrollment Table.....	2
Historical Enrollment Graph.....	3
Projected Enrollment Table.....	4
Projected Enrollment Graph.....	5
Historical & Projected Enrollment Graph.....	6
Historical & Projected Enrollment in Grade Combinations Line Graph.....	7
Historical & Projected Enrollment in Grade Combinations Stacked Column Graph.....	8
Birth to Kindergarten Relationship Graph.....	9
Additional Information	10
New England's PK-12 Enrollment Trends.....	11
Projection Methodology and Reliability	12

Enrollment Summary

NESDEC is pleased to send you this report displaying the past, present, and projected enrollments for your District. It is important to update enrollment projections every year to identify changes in enrollment patterns. Ten-year projections are designed to provide your District with yearly, up-to-date enrollment information that can be used by boards and administrators for effective planning and allocation of resources. We received the enrollment data from the District, and we assume that the method of collecting this data has been consistent from year to year.

Birth data informs Kindergarten enrollment. Each fall, NESDEC secures birth data from State sources, providing a snapshot in time as to actual and provisional births as reported by the State, and then uses this birth data to predict Kindergarten enrollments. We only use Fall birth data to assure consistency in reporting from year to year. Estimated births, which are an average of the previous five years of birth data, are based on this same snapshot. NESDEC acknowledges the variability of the provisional and the estimated birth data, and notes that the projected Kindergarten enrollments may serve as a guide to future planning.

Enrollment projections are more reliable in Years #1-3 in the future. Projections four to ten years out may serve as a guide to future enrollments and are useful for planning purposes. In light of this, NESDEC has added a “Spring Update Refresher” enrollment projection at no cost to affiliates. For more information, please refer to the Projection Methodology and Reliability section of this document.

The NESDEC enrollment projection fell within 15 students of the K-12 total, 1,481 students projected vs. 1,466 enrolled.

Births decreased by 4 from a previous ten-year average of 61 to a projected average of 57. In most districts, Grades 1-8 are very stable in enrollments. However, there have been increases in 6 of the 8 most recent years, leading to a net increase averaging 14 students per year.

Over the next three years, Grades K-4 enrollments are projected to increase by 7 students, Grades 5-8 enrollments are projected to increase by 24 students, and Grades 9-12 enrollments are projected to decrease by 32 students, as students move through the grades.

Historical Enrollment

School District: Cape Elizabeth, ME

10/29/2024

Historical Enrollment By Grade																			
Birth Year	Births*	School Year	PK	K	1	2	3	4	5	6	7	8	9	10	11	12	UNGR	K-12	PK-12
2009	74	2014-15	0	101	104	100	131	112	137	137	128	150	116	133	152	139	0	1640	1640
2010	70	2015-16	0	96	106	114	115	142	117	141	132	128	149	111	129	152	0	1632	1632
2011	56	2016-17	0	101	102	113	113	117	149	121	143	128	127	142	114	132	0	1602	1602
2012	47	2017-18	0	80	108	101	125	124	122	153	127	149	133	125	146	112	0	1605	1605
2013	54	2018-19	0	109	82	108	100	126	126	119	151	124	139	135	117	142	0	1578	1578
2014	65	2019-20	0	97	111	92	113	104	129	125	120	155	123	151	133	123	0	1576	1576
2015	60	2020-21	0	96	90	111	86	106	103	127	119	122	140	124	143	133	0	1500	1500
2016	65	2021-22	0	94	103	93	115	88	104	106	122	121	121	149	123	146	0	1485	1485
2017	63	2022-23	0	124	99	105	105	124	98	107	109	120	129	124	144	121	0	1509	1509
2018	58	2023-24	30	105	122	99	109	105	124	98	115	107	114	124	126	149	0	1497	1527
2019	63	2024-25	30	105	106	125	102	111	106	127	98	116	102	109	130	129	0	1466	1496

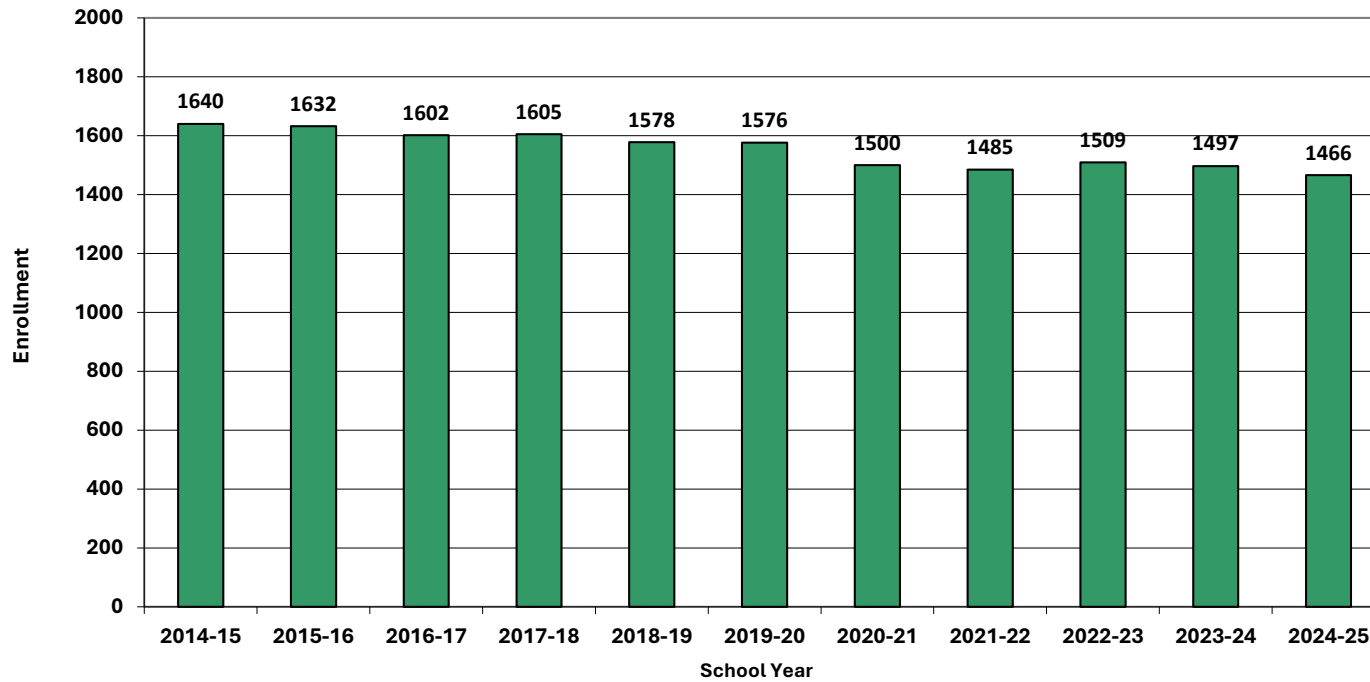
*Birth data provided by Public Health Vital Records Departments in each state.

** < 10 Not reported, to protect subgroups with fewer than 10 students.

Historical Enrollment in Grade Combinations									
School Year	PK-4	K-4	K-6	K-8	5-8	6-8	7-8	5-12	9-12
2014-15	548	548	822	1100	552	415	278	1092	540
2015-16	573	573	831	1091	518	401	260	1059	541
2016-17	546	546	816	1087	541	392	271	1056	515
2017-18	538	538	813	1089	551	429	276	1067	516
2018-19	525	525	770	1045	520	394	275	1053	533
2019-20	517	517	771	1046	529	400	275	1059	530
2020-21	489	489	719	960	471	368	241	1011	540
2021-22	493	493	703	946	453	349	243	992	539
2022-23	557	557	762	991	434	336	229	952	518
2023-24	570	540	762	984	444	320	222	957	513
2024-25	579	549	782	996	447	341	214	917	470

Historical Percentage Changes			
School Year	K-12	Diff.	%
2014-15	1640		
2015-16	1632	-8	-0.5%
2016-17	1602	-30	-1.8%
2017-18	1605	3	0.2%
2018-19	1578	-27	-1.7%
2019-20	1576	-2	-0.1%
2020-21	1500	-76	-4.8%
2021-22	1485	-15	-1.0%
2022-23	1509	24	1.6%
2023-24	1497	-12	-0.8%
2024-25	1466	-31	-2.1%
Change		-174	-10.6%

Grades K-12 Historical Enrollment



Projected Enrollment

School District: Cape Elizabeth, ME

10/29/2024

Enrollment Projections By Grade*																				
Birth Year	Births*		School Year	PK	K	1	2	3	4	5	6	7	8	9	10	11	12	UNGR	K-12	PK-12
2019	63		2024-25	30	105	106	125	102	111	106	127	98	116	102	109	130	129	0	1466	1496
2020	59		2025-26	30	102	107	108	129	105	113	108	130	97	115	100	110	132	0	1456	1486
2021	54		2026-27	30	93	104	109	112	133	107	115	110	129	96	113	101	112	0	1434	1464
2022	74		2027-28	30	127	95	106	113	115	136	109	117	109	128	94	114	102	0	1465	1495
2023	42	(prov.)	2028-29	30	72	130	96	110	116	117	138	111	116	108	126	95	116	0	1451	1481
2024	58	(est.)	2029-30	30	101	73	132	99	113	118	119	141	110	115	106	127	96	0	1450	1480
2025	57	(est.)	2030-31	30	99	103	74	137	102	115	120	121	140	109	113	107	129	0	1469	1499
2026	57	(est.)	2031-32	30	99	101	105	77	141	104	117	122	120	139	107	114	109	0	1455	1485
2027	58	(est.)	2032-33	30	100	101	102	109	79	144	106	119	121	119	136	108	116	0	1460	1490
2028	55	(est.)	2033-34	30	94	102	102	106	112	80	147	108	118	120	117	137	110	0	1453	1483
2029	57	(est.)	2034-35	30	98	96	103	106	109	114	81	150	107	117	118	118	139	0	1456	1486

Note: Ungraded students (UNGR) often are high school students whose anticipated years of graduation are unknown, or students with special needs - UNGR not included in Grade Combinations for 7-12, 9-12, etc.

Based on an estimate of births

Based on children already born

Based on students already enrolled

*Birth data provided by Public Health Vital Records Departments in each state.

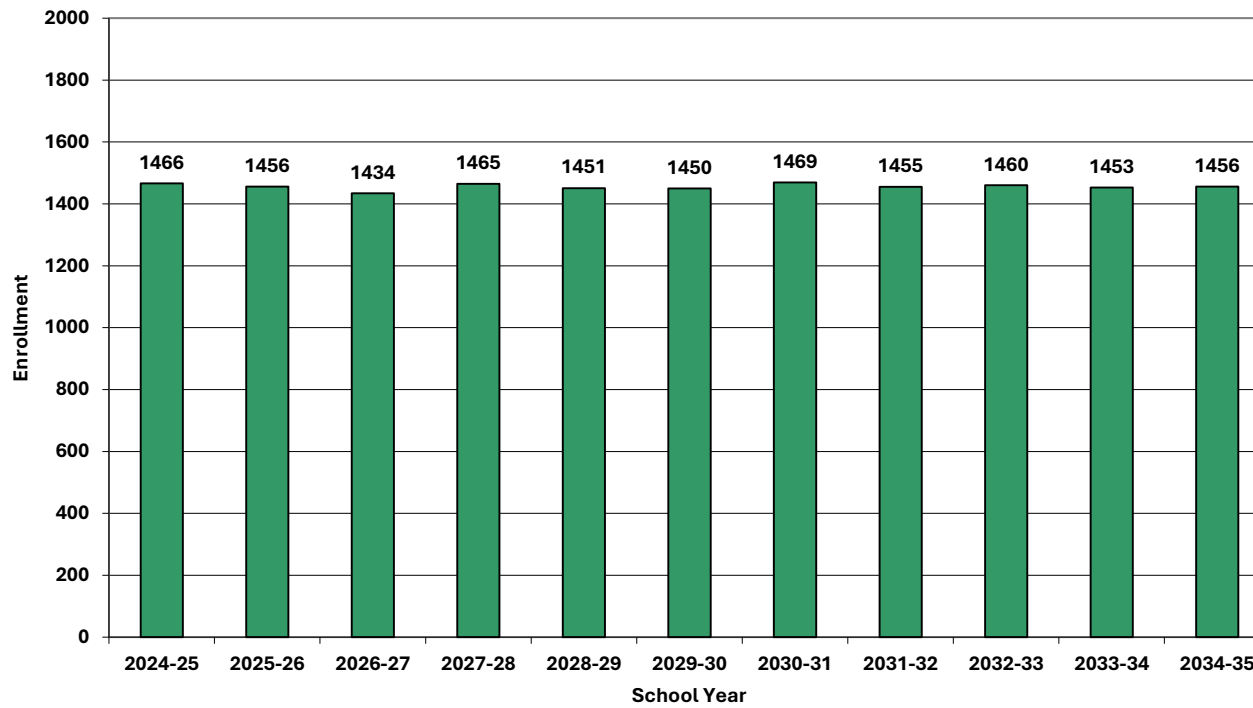
** < 10 Not reported, to protect subgroups with fewer than 10 students.

Projected Enrollment in Grade Combinations*									
School Year	PK-4	K-4	K-6	K-8	5-8	6-8	7-8	5-12	9-12
2024-25	579	549	782	996	447	341	214	917	470
2025-26	581	551	772	999	448	335	227	905	457
2026-27	581	551	773	1012	461	354	239	883	422
2027-28	586	556	801	1027	471	335	226	909	438
2028-29	554	524	779	1006	482	365	227	927	445
2029-30	548	518	755	1006	488	370	251	932	444
2030-31	545	515	750	1011	496	381	261	954	458
2031-32	553	523	744	986	463	359	242	932	469
2032-33	521	491	741	981	490	346	240	969	479
2033-34	546	516	743	969	453	373	226	937	484
2034-35	542	512	707	964	452	338	257	944	492

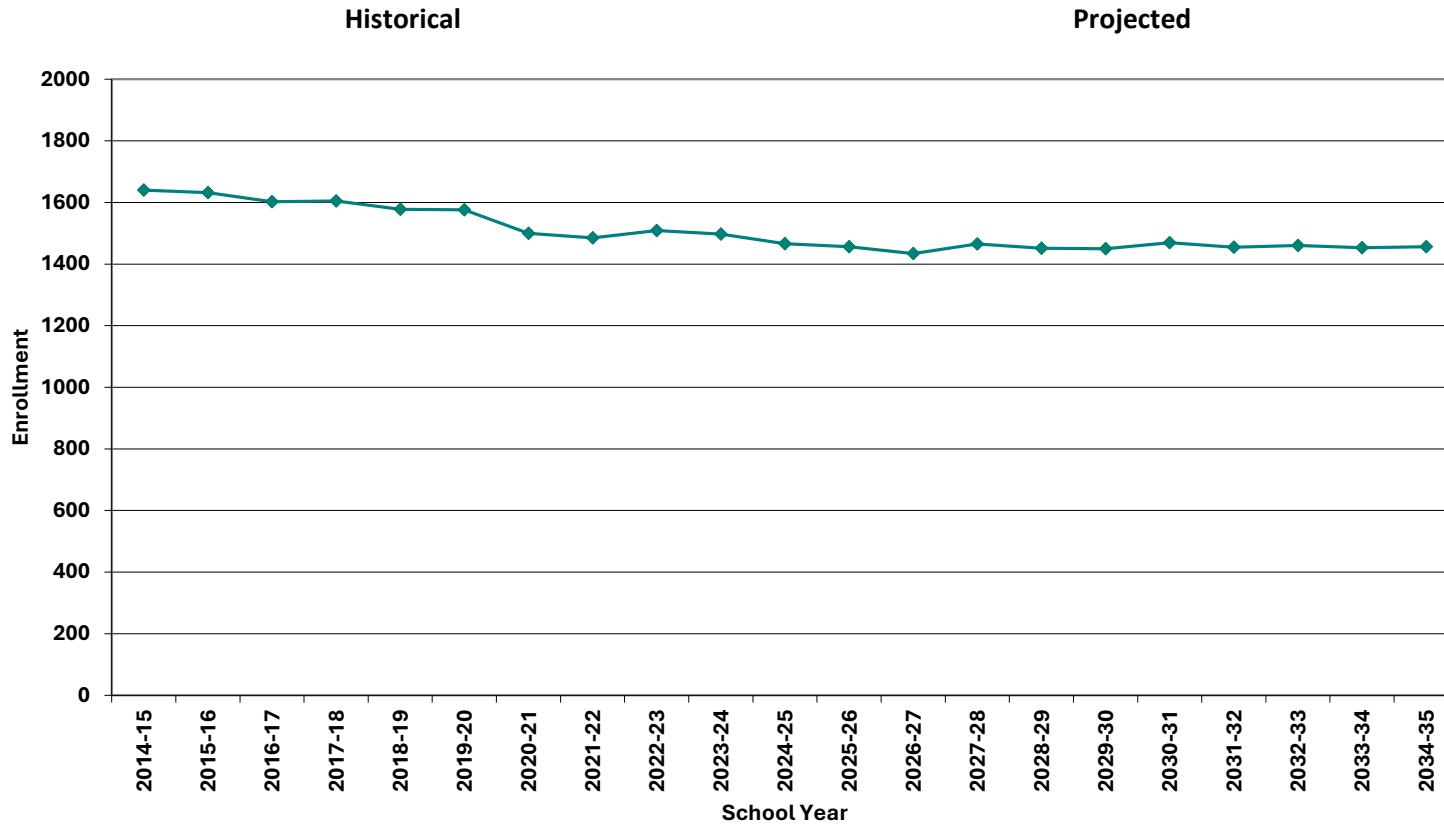
Projected Percentage Changes			
School Year	K-12	Diff.	%
2024-25	1466		
2025-26	1456	-10	-0.7%
2026-27	1434	-22	-1.5%
2027-28	1465	31	2.2%
2028-29	1451	-14	-1.0%
2029-30	1450	-1	-0.1%
2030-31	1469	19	1.3%
2031-32	1455	-14	-1.0%
2032-33	1460	5	0.3%
2033-34	1453	-7	-0.5%
2034-35	1456	3	0.2%
Change		-10	-0.7%

*Projections should be updated annually to reflect changes in in/out-migration of families, real estate sales, residential construction, births, and similar factors.

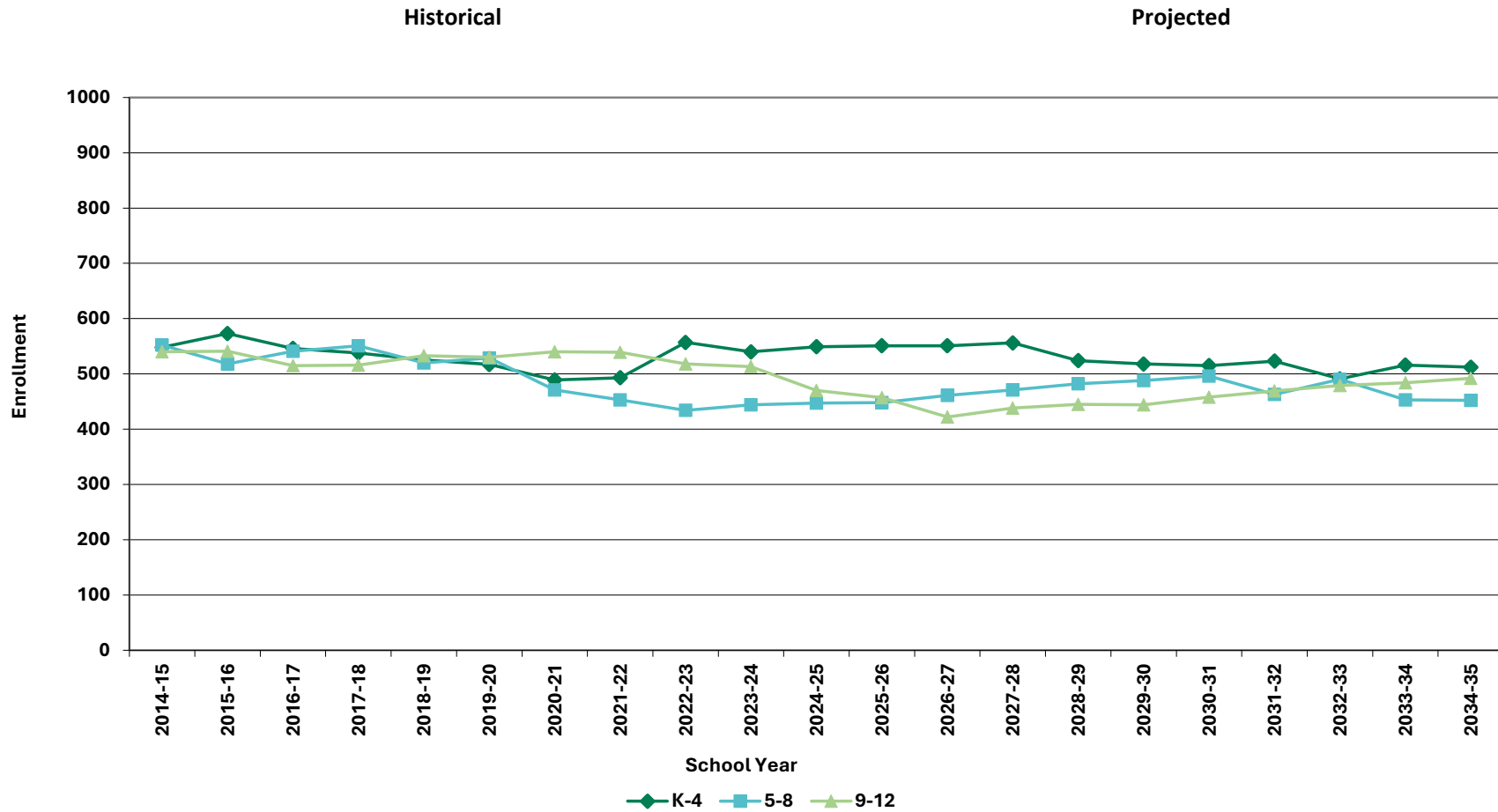
Grades K-12 Projected Enrollment



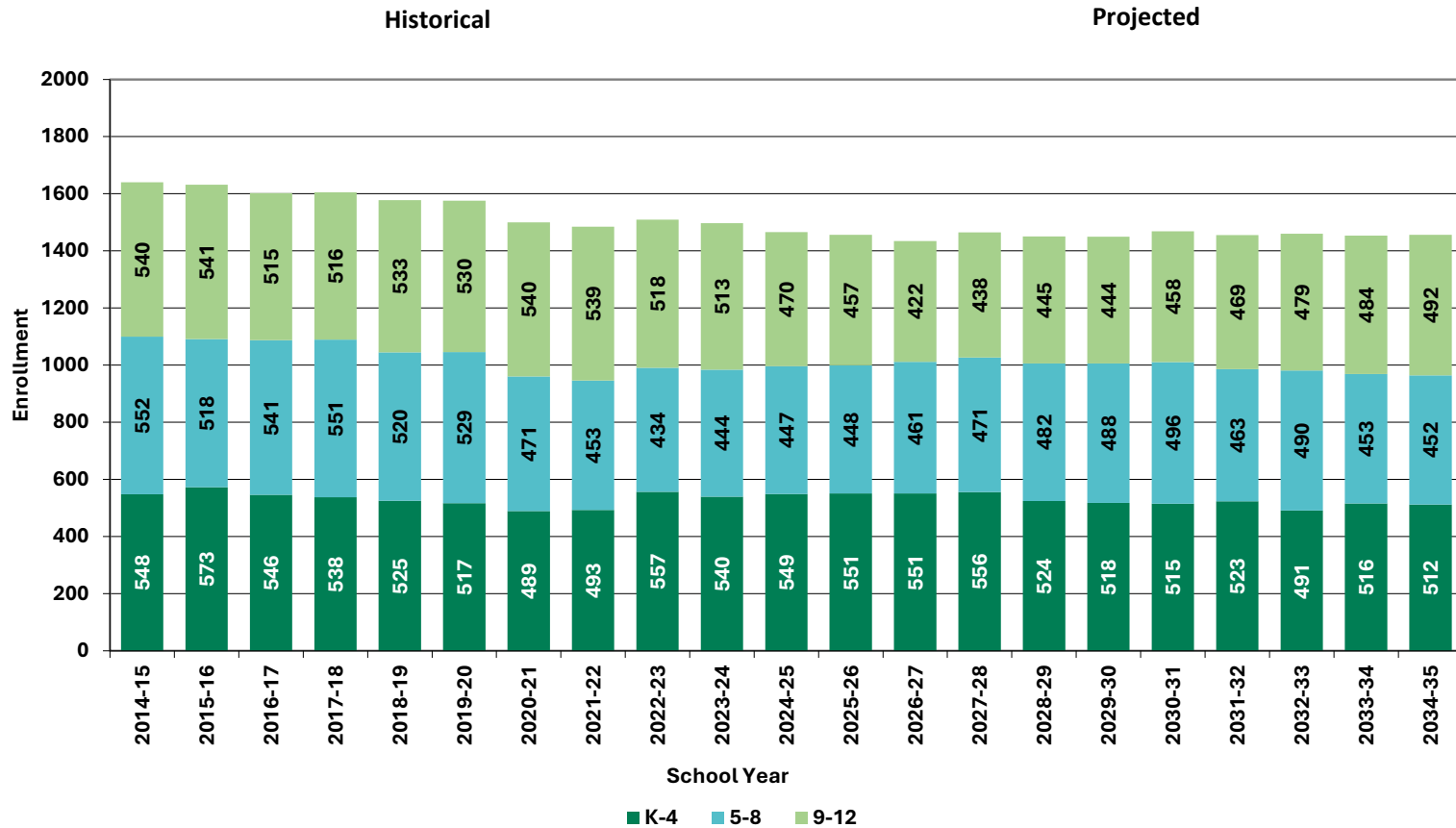
Grades K-12 Historical & Projected Enrollment



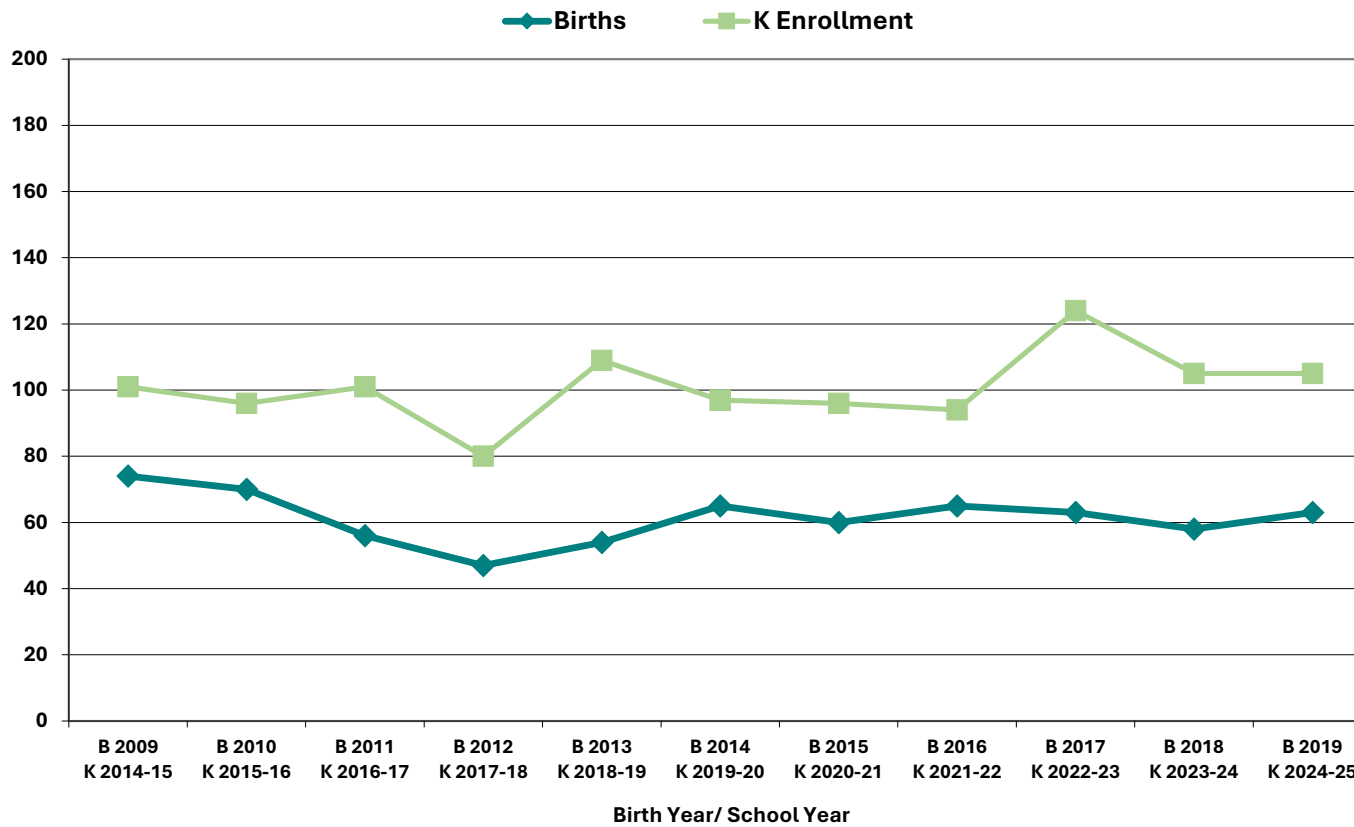
Historical & Projected Enrollments in Grade Combinations



Historical & Projected Enrollments in Grade Combinations



Birth-to-Kindergarten Relationship



Additional Information

School Year	9-12 CTE	K-12 Non-Public	K-12 Choice-In	K-12 Choice-Out	K-12 Out District SPED	K-12 Homeschool
2020-21	n/a	n/a	16	0	< 10 **	33
2021-22	n/a	n/a	23	< 10 **	< 10 **	11
2022-23	n/a	n/a	23	19	< 10 **	< 10 **
2023-24	n/a	n/a	n/a	n/a	< 10 **	< 10 **
2024-25	0	14	16	24	< 10 **	13

* Data provided by District.

"n/a" signifies that information was not provided by District.

** < 10 Not reported, to protect subgroups with fewer than 10 students.

Building Permits Issued		
Year	Single-Family	Multi-Units
2020	22	0
2021	18	20
2022	34	8
2023	24	9
2024	20 to date	12 to date

*Building permit data from HUD.

New England's PK-12 Enrollments Trends

From 2022 to 2031, the US Department of Education anticipates changes in PK-12 enrollment of -1.8% in the South, -9.7% in the West, -5.0% in the Midwest, -9.1% in the Northeast, and a total of -5.5% nationwide.

State	Fall 2022 PK - 12	Fall 2031 Projected	PK-12 Decline	% Change 2022-2031
USA	49,618,464	46,889,600	-2,728,864	-5.5%
CT	513,513	465,200	-48,313	-9.4%
ME	173,853	162,900	-10,953	-6.3%
MA	923,349	857,100	-66,249	-7.2%
NH	168,909	156,600	-12,309	-7.3%
RI	137,449	127,900	-9,549	-6.9%
VT	83,654	77,300	-6,354	-7.6%

Source: U.S. Department of Education, National Center for Education Statistics, Enrollment in public elementary and secondary schools, by region, state, and jurisdiction: Selected years, fall 1990 through fall 2031, Table 203.20, Report Generated Dec. 2023, NESDEC 2.8.24

Although most New England Districts are seeing a decline in the number of births, NESDEC's experience indicates that the impact on enrollment varies from District to District. Almost half of New England Districts have been growing in PK-12 enrollment, and a similar number are declining (often in rural areas), with the other Districts remaining stable.

Projection Methodology and Reliability

PROJECTION METHODOLOGY

Cohort component (survival) technique is a frequently used method of preparing enrollment forecasts. NESDEC uses this method, but modifies it in order to move away from forecasts that are wholly computer- or formula-driven. Such modification permits the incorporation of important, current district-specific demographic information into the generation of enrollment forecasts (such as in/out-migration of students, resident births, HUD-reported building permits, etc.). Percentages are calculated from the historical enrollment data to determine a reliable percentage of increase or decrease in enrollment between any two grades. For example, if 100 students enrolled in Grade 1 in 2023-24 increased to 104 students in Grade 2 in 2024-25, the percentage of survival would be 104%, or a ratio of 1.04. Ratios are calculated between each pair of grades or years in school over several recent years.

After study and analysis of the historical ratios, and based upon a reasonable set of assumptions regarding births, migration rates, retention rates, etc., ratios most indicative of future growth patterns are determined for each pair of grades. The ratios thus selected are applied to the present enrollment statistics to project into future years. The ratios are the key factors in the reliability of the projections, assuming validity of the data at the starting point.

RELIABILITY OF ENROLLMENT PROJECTIONS

Projections can serve as useful guides to school administrators for educational planning. Enrollment projections are more reliable in Years #1-3 in the future and less reliable in the “out-years.” Projections four to ten years out may serve as a guide to future enrollments and are useful for planning purposes, but they should be viewed as subject to change given the likelihood of potential shifts in underlying assumptions/trends, such as student migration, births as they relate to Kindergarten enrollment, and other factors.

Projections that are based upon **the children who already are in the district** (the current K-12 population only) will be the most reliable. The second level of reliability will be for those children already **born into the community but not yet old enough to be in school**. The least reliable category is the group for which an estimate must be made **to predict the number of births**, thereby adding additional uncertainty. See these three multi-colored groupings on the “Projected Enrollment” tab.

Annual updates allow for early identification of recent changes in historical trends. When the actual enrollment in a grade is significantly different (higher or lower) from the projected number, it is important (yet difficult) to determine whether this is a one-year aberration or whether a new trend may have begun. **In light of this possibility, NESDEC urges all school districts to have updated enrollment forecasts developed by NESDEC each October.** This service is available at no cost to affiliated school districts.