

Benchmarks
April 3, 2007



Benchmarks
April 3, 2007

Population- 2005 Estimated

Brunswick	21,820
Cape Elizabeth	8,922
Cumberland	7,656
Falmouth	10,601
Freeport	8,066
Gorham	15,300
Scarborough	18,897
South Portland	23,742
Windham	16,371
Yarmouth	8,257

Census Bureau 2005 est.



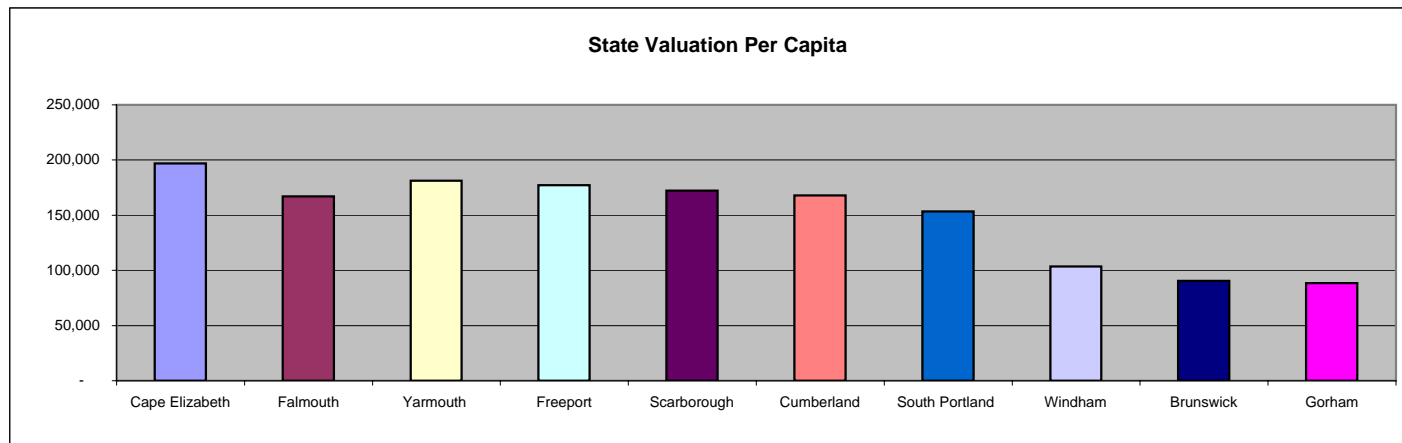
2007 State Valuation (000)

South Portland	3,642,750,000
Scarborough	3,255,800,000
Brunswick	1,975,600,000
Falmouth	1,972,000,000
Cape Elizabeth	1,756,550,000
Windham	1,697,250,000
Yarmouth	1,495,650,000
Freeport	1,429,300,000
Gorham	1,352,300,000
Cumberland	1,286,200,000

State Valuation Per Capita

Cape Elizabeth	196,879
Falmouth	166,945
Yarmouth	181,137
Freeport	177,201
Scarborough	172,292
Cumberland	167,999
South Portland	153,431
Windham	103,674
Brunswick	90,541
Gorham	88,386

Me. Bur. of Revenue Services



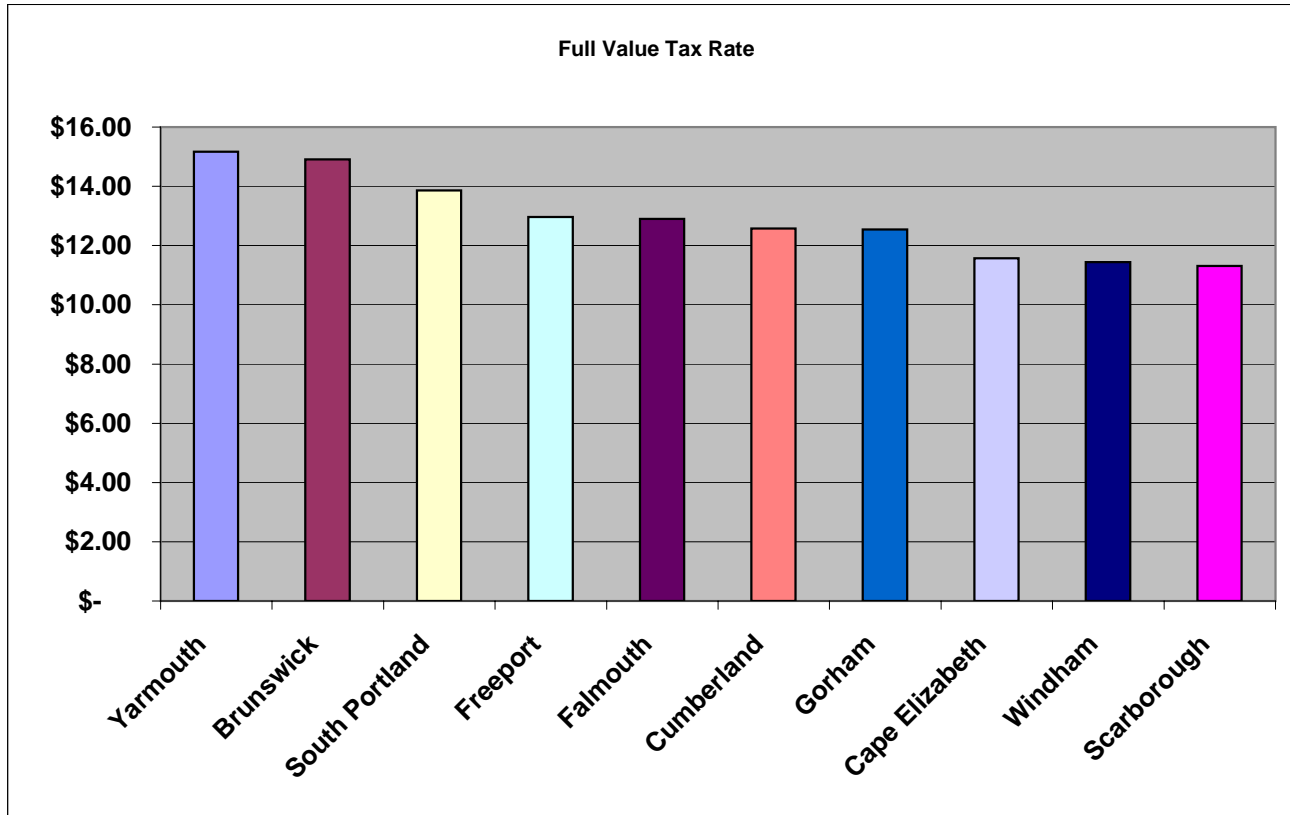
2006 Tax Assessment

**Benchmarks
April 3, 2007**

Full Value Tax Rate

Brunswick	29,442,333	Yarmouth	\$	15.17
Cape Elizabeth	20,325,647	Brunswick	\$	14.91
Cumberland	16,169,210	South Portland	\$	13.86
Falmouth	25,442,761	Freeport	\$	12.96
Freeport	18,525,125	Falmouth	\$	12.90
Gorham	16,960,016	Cumberland	\$	12.57
Scarborough	36,824,647	Gorham	\$	12.54
South Portland	50,456,178	Cape Elizabeth	\$	11.57
Windham	19,426,942	Windham	\$	11.44
Yarmouth	22,674,448	Scarborough	\$	11.31
		Mean	\$	12.92

Financial Statements as of June 20 2006



**Benchmarks
April 3, 2007**

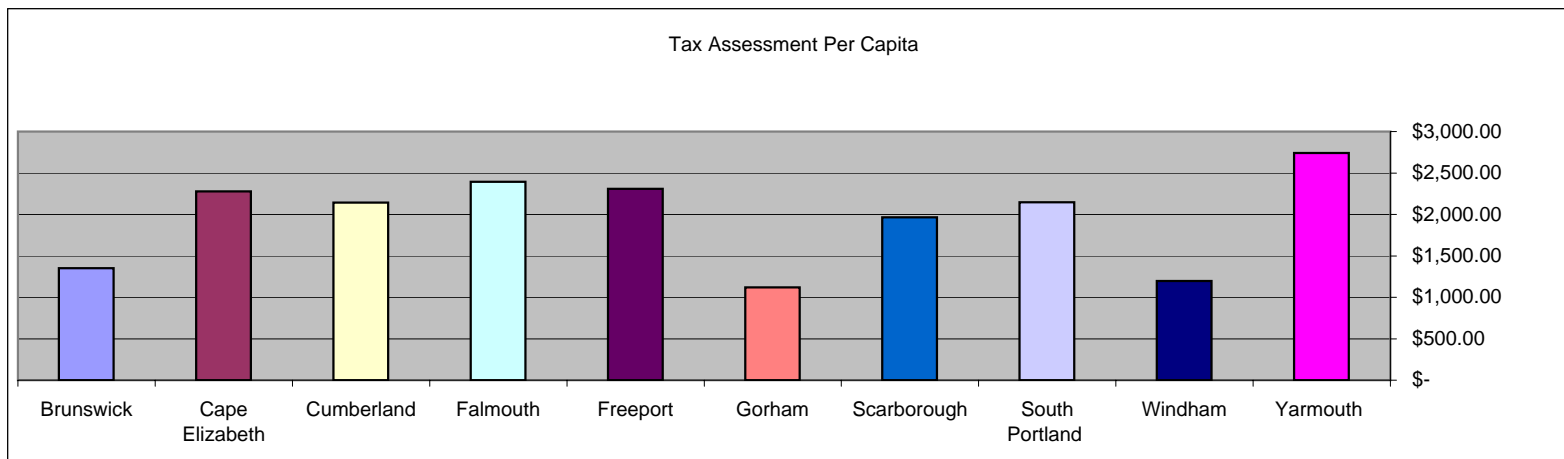
	Tax Assessment Per Capita	Circuit Breaker Refunds	Total Refunded
Brunswick	\$ 1,351.87	1474 \$	802,961
Cape Elizabeth	\$ 2,278.07	874 \$	634,377
Cumberland	\$ 2,141.05	338 \$	224,121
Falmouth	\$ 2,393.94	778 \$	595,416
Freeport	\$ 2,307.56	536 \$	344,200
Gorham	\$ 1,119.84	1217 \$	680,145
Scarborough	\$ 1,963.56	1507 \$	951,345
South Portland	\$ 2,145.88	2701 \$	1,471,879
Windham	\$ 1,198.60	1322 \$	754,296
Yarmouth	\$ 2,739.45	736 \$	586,985
Mean	\$ 1,963.98		

Me. Bur. Of Rev. Svcs.



Average Refund Per Elig. Household

Brunswick	\$ 544.75
Cape Elizabeth	\$ 725.83
Cumberland	\$ 663.08
Falmouth	\$ 765.32
Freeport	\$ 642.16
Gorham	\$ 558.87
Scarborough	\$ 631.28
South Portland	\$ 544.94
Windham	\$ 570.57
Yarmouth	\$ 797.53



**Benchmarks
April 3, 2007**

General Fund Assets

Brunswick	17,997,595
Cape Elizabeth	6,235,648
Cumberland	4,436,320
Falmouth	21,051,936
Freeport	9,984,737
Gorham	12,629,744
Scarborough	11,779,105
South Portland	31,524,359
Windham	13,799,242
Yarmouth	6,158,422

Financial Statements as of June 20 2006

Taxes and Liens Receivable

Brunswick	544,395
Cape Elizabeth	158,673
Cumberland	326,314
Falmouth	515,537
Freeport	895,637
Gorham	774,543
Scarborough	467,458
South Portland	1,267,624
Windham	944,306
Yarmouth	314,485

as % of 2005 Valuation

2.02%
0.81%
2.01%
2.03%
4.87%
4.46%
1.31%
2.50%
4.59%
1.38%
2.60%

Financial Statements as of June 20 2006

Mean

Designated/Reserve Fund Balance

Brunswick	5,992,877
Cape Elizabeth	1,195,302
Cumberland	856,060
Falmouth	7,011,807
Freeport	1,385,000
Gorham	5,141,010
Scarborough	2,646,445
South Portland	8,293,579
Windham	683,859
Yarmouth	2,646,588



**Benchmarks
April 3, 2007**

	Undesignated Fund Balance		as % of General Fund Revenues
Brunswick	7,507,802		15.5%
Cape Elizabeth	2,441,478		9.0%
Cumberland	692,392		
Falmouth	10,834,557		30.4%
Freeport	3,268,880		13.4%
Gorham	5,788,949		15.4%
Scarborough	5,519,830		10.2%
South Portland	8,065,216		12.4%
Windham	3,315,548		8.4%
Yarmouth	1,359,307		4.9%
Mean			13.3%

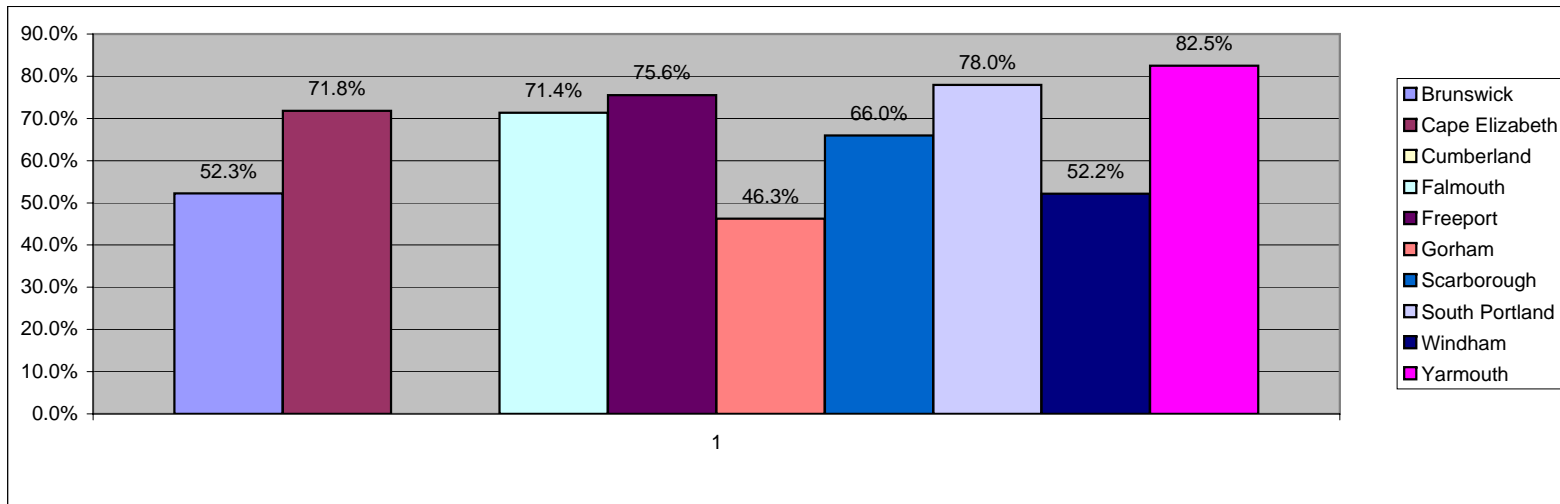


	Financial Statements as of June 20 2006		Revenue Per Capita
	Total General Fund Revenues inc. Schools		
Brunswick	51,605,198	\$	2,369.49
Cape Elizabeth	28,452,162	\$	3,164.16
Cumberland		\$	-
Falmouth	37,316,113	\$	3,511.11
Freeport	24,692,576	\$	3,075.81
Gorham	41,424,414	\$	2,735.19
Scarborough	54,291,753	\$	2,894.94
South Portland	66,963,938	\$	2,847.95
Windham	42,640,245	\$	2,630.81
Yarmouth	27,494,945	\$	3,321.85
Mean		\$	2,950.15

Prop. Tax as % of General Fund Revs

**Benchmarks
April 3, 2007**

Brunswick	52.3%
Cape Elizabeth	71.8%
Cumberland	
Falmouth	71.4%
Freeport	75.6%
Gorham	46.3%
Scarborough	66.0%
South Portland	78.0%
Windham	52.2%
Yarmouth	82.5%
Mean	66.2%



Revenue-Licenses and Permits

as % of Total Revenues

Brunswick	359,681	0.7%
Cape Elizabeth	200,246	0.7%
Cumberland	195,623	
Falmouth	456,712	1.3%
Freeport	297,973	1.2%
Gorham	671,498	1.8%
Scarborough	611,420	1.1%
South Portland	679,389	1.0%
Windham	402,185	1.0%
Yarmouth	171,463	0.6%
Mean		1.1%



**Benchmarks
April 3, 2007**

	Investment Income		as % of Total Revenues
Brunswick	515,211		1.1%
Cape Elizabeth	178,700		0.7%
Cumberland	129,940		
Falmouth	787,545		2.2%
Freeport	643,044		2.6%
Gorham	243,115		0.6%
Scarborough	260,661		0.5%
South Portland	1,055,542		1.6%
Windham	324,418		0.8%
Yarmouth	106,050		0.4%
Mean			1.2%



	Financial Statements as of June 20 2006 Charges for Services		as % of Total Revenues
Brunswick	2,233,264		4.6%
Cape Elizabeth	605,493		2.2%
Cumberland	757,849		
Falmouth	446,850		1.3%
Freeport	497,409		2.0%
Gorham	1,064,714		2.8%
Scarborough	3,107,066		5.7%
South Portland	1,473,650		2.3%
Windham	1,475,895		3.7%
Yarmouth	627,874		2.3%
Mean			3.0%

	Financial Statements as of June 20 2006 Revenue-Intergovernmental		as % of Total Revenues
Brunswick	17,901,691		37.1%
Cape Elizabeth	5,299,458		19.4%
Cumberland			
Falmouth	8,860,681		24.8%
Freeport	3,979,311		16.4%
Gorham	19,079,829		50.8%
Scarborough	8,520,307		15.7%
South Portland	11,381,734		17.5%
Windham	19,617,746		49.8%
Yarmouth	2,806,790		10.2%
Mean			26.9%



Financial Statements as of June 20 2006

**Benchmarks
April 3, 2007**

Revenue-Excise Taxes

Brunswick	2,633,485
Cape Elizabeth	1,821,610
Cumberland	1,503,116
Falmouth	2,387,763
Freeport	1,365,683
Gorham	2,480,592
Scarborough	4,438,334
South Portland	4,044,271
Windham	2,772,400
Yarmouth	1,454,302
Mean	



Excise Taxes Per Capita

\$	120.92
\$	202.58
\$	199.04
\$	224.67
\$	170.11
\$	163.79
\$	236.66
\$	172.00
\$	171.05
\$	175.70
\$	183.65

Financial Statements as of June 20 2006

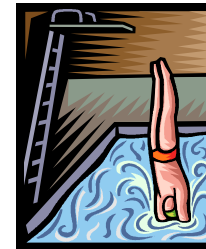
Revenue-Adult Ed-Recreation etc.

Brunswick	16,945
Cape Elizabeth	1,107,387
Cumberland	345,274
Falmouth	635,127
Freeport	
Gorham	483,803
Scarborough	1,351,165
South Portland	123,957
Windham	29,661
Yarmouth	
Mean	



Recreation Rev. Per Capita

\$	0.78
\$	123.15
\$	45.72
\$	59.76
\$	-
\$	31.94
\$	72.05
\$	5.27
\$	1.83
\$	-
\$	42.56



Financial Statements as of June 20 2006

**Benchmarks
April 3, 2007**

Bonded Debt-Governmental Activities

Bonded Debt Per Capita

Brunswick	9,720,000	\$	446.30
Cape Elizabeth	28,139,873	\$	3,129.43
Cumberland	9,315,182	\$	1,233.47
Falmouth	17,486,000	\$	1,645.28
Freeport	13,495,250	\$	1,681.02
Gorham	32,733,250	\$	2,161.32
Scarborough	68,844,000	\$	3,670.90
South Portland	33,870,681	\$	1,440.51
Windham	39,139,219	\$	2,414.81
Yarmouth	25,673,725	\$	3,101.82
Mean	27,841,718	\$	2,092.49



Financial Statements as of June 20 2006

Expenditures-General Government

Per Capita

Brunswick	2,819,552	\$	129.46
Cape Elizabeth	1,001,864	\$	111.42
Cumberland	867,975	\$	114.93
Falmouth	1,563,165	\$	147.08
Freeport	1,177,728	\$	146.70
Gorham	960,041	\$	63.39
Scarborough	3,753,919	\$	200.17
South Portland	2,918,824	\$	124.14
Windham	1,182,767	\$	72.97
Yarmouth	1,049,842	\$	126.84
Mean	1,729,568	\$	123.71

Financial Statements as of June 20 2006

Expenditures- Insurance/Emp. Benefits

Per Capita

Brunswick	2,268,100	\$	104.14
Cape Elizabeth	773,787	\$	86.05
Cumberland	924,244	\$	122.38
Falmouth	939,712	\$	88.42
Freeport	1,561,221	\$	194.47
Gorham	1,595,005	\$	105.32
South Portland	4,463,895	\$	189.85
Windham	1,523,777	\$	94.01
Yarmouth	1,048,025	\$	126.62
Mean	1,509,777	\$	123.47

Exc. Insurance

Financial Statements as of June 20 2006



Benchmarks
April 3, 2007

Expenditures-Police Department

Brunswick	2,860,256
Cape Elizabeth	867,715
Cumberland	860,285
Falmouth	1,439,164
Freeport	800,584
Gorham	1,321,890
Scarborough	3,733,757
South Portland	3,025,901
Windham	1,420,918
Yarmouth	704,801

Financial Statements as of June 20 2006



Per Capita

\$	131.33
\$	96.50
\$	113.91
\$	135.41
\$	99.72
\$	87.28
\$	199.09
\$	128.69
\$	87.67
\$	85.15

Bruns, Fal, Cumb. Scarborough include dispatching here.

Expenditures-Fire Department

Brunswick	1,769,901
Cape Elizabeth	239,367
Cumberland	260,687
Falmouth	798,919
Freeport	283,733
Gorham	651,139
Scarborough	1,412,628
South Portland	3,874,984
Windham	608,147
Yarmouth	410,612

Financial Statements as of June 20 2006



Per Capita

\$	81.27
\$	26.62
\$	34.52
\$	75.17
\$	35.34
\$	42.99
\$	75.32
\$	164.80
\$	37.52
\$	49.61

Mean

\$ 62.32

**Benchmarks
April 3, 2007**

Expenditures- Communications

Per Capita

Brunswick		\$	-
Cape Elizabeth	231,752	\$	25.77
Cumberland		\$	-
Falmouth		\$	-
Freeport	201,558	\$	25.11
Gorham	311,417	\$	20.56
Scarborough		\$	-
South Portland	560,704	\$	23.85
Windham	323,076	\$	19.93
Yarmouth	323,724	\$	39.11
Financial Statements as of June 20 2006	Mean	\$	25.72



Exps-Public Works inc. Solid Waste

Per Capita

Brunswick	3,956,725	\$	181.68
Cape Elizabeth	1,617,744	\$	179.91
Cumberland	1,933,409	\$	256.01
Falmouth		\$	-
Freeport	1,651,548	\$	205.72
Gorham	2,124,712	\$	140.29
Scarborough	5,702,033	\$	304.04
South Portland	3,789,255	\$	161.16
Windham	2,828,052	\$	174.48
Yarmouth	1,605,176	\$	193.93
	Mean	\$	199.69



**Benchmarks
April 3, 2007**

Expenditures-Solid Waste

Per Capita

Brunswick	800,394
Cape Elizabeth	801,933
Cumberland	984,498
Falmouth	
Freeport	444,709
Gorham	850,150
Scarborough	1,621,533
South Portland	1,909,179
Windham	971,986
Yarmouth	809,306



36.75
89.18
130.36
-
55.39
56.13
86.46
81.20
59.97
97.78
77.03

Financial Statements as of June 20 2006

Mean

Expenditures-Library

Per Capita

Brunswick	921,850
Cape Elizabeth	363,161
Cumberland	422,047
Falmouth	326,180
Freeport	333,418
Gorham	410,561
Scarborough	645,679
South Portland	721,594
Windham	288,215
Yarmouth	320,623



42.33
40.39
55.89
30.69
41.53
27.11
34.43
30.69
17.78
38.74
35.96

Financial Statements as of June 20 2006

Mean

\$

Expenditures-Parks and Recreation

Per Capita

Brunswick	701,975
Cape Elizabeth	1,682,604
Cumberland	575,731
Falmouth	1,371,427
Freeport	624,337
Gorham	724,689
Scarborough	1,980,654
South Portland	2,788,034
Windham	221,818
Yarmouth	260,401



\$
\$
\$
\$
\$
\$
\$
\$
\$
\$

32.23
187.12
76.24
129.04
77.77
47.85
105.61
118.57
13.69
31.46

Financial Statements as of June 20 2006

Mean

\$

81.96

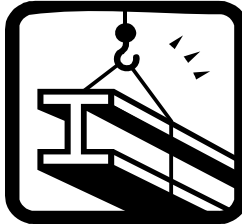
**Benchmarks
April 3, 2007**

Expenditures-Health and Welfare			Per Capita
Brunswick	194,494	\$	8.93
Cape Elizabeth	25,833	\$	2.87
Cumberland	33,125	\$	4.39
Falmouth		\$	-
Freeport	116,612	\$	14.53
Gorham	45,423	\$	3.00
Scarborough	12,927	\$	0.69
South Portland	306,469	\$	13.03
Windham	246,668	\$	15.22
Yarmouth	25,676	\$	3.10

Financial Statements as of June 20 2006

Mean \$ 7.31

Expenditures- Municipal Debt Service			Per Capita
Brunswick	3,384,268	\$	155.39
Cape Elizabeth	1,041,047	\$	115.77
Cumberland	478,085	\$	63.31
Falmouth	2,482,942	\$	233.62
Freeport	1,841,519	\$	229.39
Gorham	940,760	\$	62.12
Scarborough	4,065,377	\$	216.77
South Portland	1,916,161	\$	81.49
Windham	356,335	\$	21.99
Yarmouth	1,381,607	\$	166.92



Financial Statements as of June 20 2006

Mean \$ 134.68

Benchmarks
April 3, 2007

Library- Per Capita Operating Exps

Brunswick	\$	42.25
Cape Elizabeth	\$	40.70
Cumberland	\$	55.13
Falmouth	\$	30.77
Freeport	\$	41.34
Gorham	\$	26.83
Scarborough	\$	34.17
South Portland	\$	30.39
Windham	\$	17.61
Yarmouth	\$	38.83
Mean	\$	39.78

Library-Per Capita Circulation

Brunswick		12.87
Cape Elizabeth		12.41
Cumberland		12.75
Falmouth		13.39
Freeport		29.85
Gorham		6.19
Scarborough		9.41
South Portland		8.65
Windham		7.23
Yarmouth		19.38
Mean	\$	13.21

Library-Total Program Attendance

Brunswick	11,421
Cape Elizabeth	4,755
Cumberland	3,349
Falmouth	6,324
Freeport	4,958
Gorham	4,899
Scarborough	10,465
South Portland	-
Windham	4,607
Yarmouth	-
Mean	6,347

Library Data from Maine State Library



**Benchmarks
April 3, 2007**

Schools-October 2006 School Enrollment

Brunswick	3,333
Cape Elizabeth	1,801
Cumberland	2,311
Falmouth	2,145
Freeport	1,205
Gorham	2,722
Scarborough	3,311
South Portland	3,065
Windham	2,856
Yarmouth	1,395



ME Dept of Education Website

School FY 2006 Budget -General Admini

as % of Budget

Per Student

Brunswick	874,819	3.0%	\$	259.44
Cape Elizabeth	553,483	3.2%	\$	298.53
Cumberland	968,909	4.1%	\$	414.60
Falmouth	905,742	4.0%	\$	421.67
Freeport	744,618	5.4%	\$	570.15
Gorham	701,667	2.7%	\$	254.87
Scarborough	672,476	2.2%	\$	203.84
South Portland	1,896,527	5.2%	\$	615.76
Windham	1,011,444	3.8%	\$	355.77
Yarmouth	579,210	3.4%	\$	411.66
Mean		3.7%	\$	380.63



ME Dept of Education Website

School FY 2006 Budget -School Admin

as % of Budget

Per Student

Brunswick	1,486,452	5.0%	\$	440.82
Cape Elizabeth	857,985	4.9%	\$	462.78
Cumberland	1,111,528	4.7%	\$	475.62
Falmouth	941,016	4.2%	\$	438.09
Freeport	719,471	5.2%	\$	550.90
Gorham	1,722,414	6.7%	\$	625.65
Scarborough	1,048,486	3.4%	\$	317.82
South Portland	1,882,464	5.2%	\$	611.19
Windham	1,010,644	3.8%	\$	355.49
Yarmouth	797,511	4.7%	\$	566.82
Mean		4.8%	\$	484.52



ME Dept of Education Website

**Benchmarks
April 3, 2007**

	School FY 2006 Budget -Total Administration	as % of Budget		Per Student
Brunswick	2,361,271	8.0%	\$	700.26
Cape Elizabeth	1,411,468	8.0%	\$	761.31
Cumberland	2,080,437	8.7%	\$	890.22
Falmouth	1,846,758	8.1%	\$	859.76
Freeport	1,464,089	10.6%	\$	1,121.05
Gorham	2,424,081	9.4%	\$	880.52
Scarborough	1,720,962	5.6%	\$	521.66
South Portland	3,778,991	10.4%	\$	1,226.95
Windham	2,022,088	7.6%	\$	711.25
Yarmouth	1,376,721	8.1%	\$	978.48
Mean		8.5%		865.15

**ME Dept of Education Website
School FY 2006 Budget -Instruction**

	School FY 2006 Budget -Instruction	as % of Budget		Per Student
Brunswick	20,633,170	69.8%	\$	6,118.97
Cape Elizabeth	12,468,538	71.0%	\$	6,725.21
Cumberland	15,872,664	66.5%	\$	6,791.90
Falmouth	15,550,834	68.6%	\$	7,239.68
Freeport	9,699,056	70.1%	\$	7,426.54
Gorham	17,162,923	66.3%	\$	6,234.26
Scarborough	19,742,821	64.4%	\$	5,984.49
South Portland	25,731,078	70.9%	\$	8,354.25
Windham	17,016,078	64.0%	\$	5,985.25
Yarmouth	11,090,771	64.9%	\$	7,882.57
Mean		67.7%	\$	6,874.31



School FY 2006 Budget -Operations

	School FY 2006 Budget -Operations	as % of Budget		Per Student
Brunswick	3,710,840	12.6%	\$	1,100.49
Cape Elizabeth	1,458,281	8.3%	\$	786.56
Cumberland	2,328,162	9.8%	\$	996.22
Falmouth	2,267,092	10.0%	\$	1,055.44
Freeport	975,546	7.0%	\$	746.97
Gorham	2,095,946	8.1%	\$	761.33
Scarborough	3,153,728	10.3%	\$	955.96
South Portland	3,316,010	9.1%	\$	1,076.63
Windham	2,661,368	10.0%	\$	936.11
Yarmouth	1,490,045	8.7%	\$	1,059.02
Mean		9.4%	\$	947.47

ME Dept of Education Website

**Benchmarks
April 3, 2007**



	School FY 2006 Budget -Transportation	as % of Budget		Per Student
Brunswick	1,491,668	5.0%	\$	442.37
Cape Elizabeth	518,376	3.0%	\$	279.60
Cumberland	1,145,933	4.8%	\$	490.34
Falmouth	1,040,202	4.6%	\$	484.27
Freeport	441,019	3.2%	\$	337.69
Gorham	1,305,074	5.0%	\$	474.06
Scarborough	1,290,513	4.2%	\$	391.18
South Portland	938,865	2.6%	\$	304.83
Windham	1,339,734	5.0%	\$	471.24
Yarmouth	732,322	4.3%	\$	520.48
Mean		4.2%	\$	419.61

ME Dept of Education Website

	School FY 2006 Budget -Debt Service	as % of Budget		Per Student
Brunswick	1,349,638	4.6%	\$	400.25
Cape Elizabeth	1,697,541	9.7%	\$	915.61
Cumberland	2,044,565	8.6%	\$	874.87
Falmouth	1,965,618	8.7%	\$	915.09
Freeport	1,244,089	9.0%	\$	952.59
Gorham	2,879,647	11.1%	\$	1,046.00
Scarborough	4,728,406	15.4%	\$	1,433.28
South Portland	2,503,533	6.9%	\$	812.84
Windham	3,550,908	13.4%	\$	1,249.00
Yarmouth	2,166,192	12.7%	\$	1,539.58
Mean		10.0%	\$	1,013.91

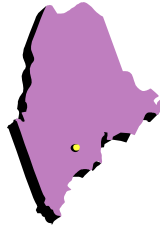
ME Dept of Education Website
School FY 2006 Budget -Total

		as % of Town and School Revenue		Per Student
Brunswick	29,561,637	57.3%	\$	8,766.80
Cape Elizabeth	17,554,204	61.7%	\$	9,468.29
Cumberland	23,853,245		\$	10,206.78
Falmouth	22,670,504	60.8%	\$	10,554.24
Freeport	13,838,049	56.0%	\$	10,595.75
Gorham	25,892,671	62.5%	\$	9,405.26
Scarborough	30,636,430	56.4%	\$	9,286.58
South Portland	36,268,477	54.2%	\$	11,775.48
Windham	26,590,177	62.4%	\$	9,352.86
Yarmouth	17,077,614	62.1%	\$	12,137.61
Mean		59.3%	\$	10,154.96

**Benchmarks
April 3, 2007**

Schools- 2005-2006 State Share %

Brunswick	49.3%
Cape Elizabeth	17.7%
Cumberland	44.7%
Falmouth	28.1%
Freeport	13.2%
Gorham	64.3%
Scarborough	24.3%
South Portland	17.3%
Windham	56.3%
Yarmouth	13.3%



**ME Dept of Education Website
Schools-Per Pupil Valuation**

Brunswick	\$	464,413
Cape Elizabeth	\$	768,581
Cumberland	\$	450,727
Falmouth	\$	724,814
Freeport	\$	904,096
Gorham	\$	394,333
Scarborough	\$	769,567
South Portland	\$	997,273
Windham	\$	450,457
Yarmouth	\$	894,456

Students Per Classroom Teacher

Brunswick	14.1
Cape Elizabeth	13.5
Cumberland	13.0
Falmouth	12.4
Freeport	12.1
Gorham	14.0
Scarborough	13.4
South Portland	11.8
Windham	14.5
Yarmouth	12.6

Mean

13.1

Schools 2007- Average Instructional Salary Classroom Teachers 2007- Avg. Classroom Teacher Salary

Brunswick	51,193	236	49,224
Cape Elizabeth	51,037	133	48,664
Cumberland	51,522	178	49,605
Falmouth	54,416	173	52,257
Freeport	51,194	100	48,756
Gorham	50,116	194	48,217
Scarborough	46,192	248	44,052
South Portland	52,029	260	49,949
Windham	47,305	197	44,473
Yarmouth	56,654	111	54,127
Mean	51,166	Mean	48,932



Includes Administration Except Superintendent

ME Dept of Education Website

**Benchmarks
April 3, 2007**

**Special Education Students
Not a Financial Benchmark
But May Impact Budget**

Brunswick	451	13.5%
Cape Elizabeth	181	10.0%
Cumberland	197	8.5%
Falmouth	234	10.9%
Freeport	170	14.1%
Gorham	409	15.0%
Scarborough	392	11.8%
South Portland	482	15.7%
Windham	298	10.4%
Yarmouth	113	8.1%
Mean		11.8%