

# Gull Crest Trail Update

- Map of trail designed by John Morton
- Utilizes the drier forested areas at Gull Crest
- The trail committee proposes that construction of the trail be done in phases
- Phase 1 (in yellow) is outside of designated wetland and not under DEP jurisdiction
- Phase 2 (in red) is partially in wetland zones



# Gull Crest Trail Update

- Hired John Morton to layout and flag a trail after meeting with trails committee, the town manager, town planner, and a representative of the conservation commission and snow mobile club
- Consulted DEP project manager for Gull Crest (Doug Burdick)
  - Received very positive feedback and support for plan due to lower wetland impact
  - DEP concerned only with the areas in designated wetland
  - DEP may decide that an application for project modification not required after receiving an updated map and sketch of construction details
- Consulted with Town Engineer (Steve Harding at OEST Associates)
  - Estimated cost for scope of work requested by DEP between \$1000 to \$1500 (GPS mapping and development of construction details)
- Begun fundraising
  - over \$10,000 (25% of budget) pledged in 2 weeks

# Gull Crest Trail Benefits

**Support outside of skiing community has been enthusiastic. The benefits of the trail are:**

- Trail offers challenging terrain and scenic vistas
- Trail maximizes the use of available topography while minimizing the impact on wetland
- Will be 'competition worthy' and suitable for heavy use by runners, mountain bikes , horses, snowmobiles and others in the community
- Will allow groomed ski trails with a minimum snow pack
- Grooming by the Nordic skiers and snowmobiles make trail accessible year round to everyone in the community
- Trail more accessible for the less agile members of the community

# Gull Crest Trail Fund

## Budget

• Trail layout and Design (By John Morton)	\$2,001
• GPS Mapping	~\$ 500
• Trail Construction Design (By OEST)	~\$1,500
• DEP Application for Project Modification	\$ 119
• Excavation & cutting	~\$25,000
• Culverts & construction materials	~\$3,200
• Signage and maps	~\$ 750
• Supplies	~\$ 80
• Contingency (15%)	<u>\$5,850</u>
Total:	\$39, 000

# Gull Crest Trail – Phase 1

## Section north of Transfer Station

- Is outside of designated wetland – no additional permitting required
- Is highest priority for Nordic skiing due to terrain and NW exposure
- Is largely undeveloped

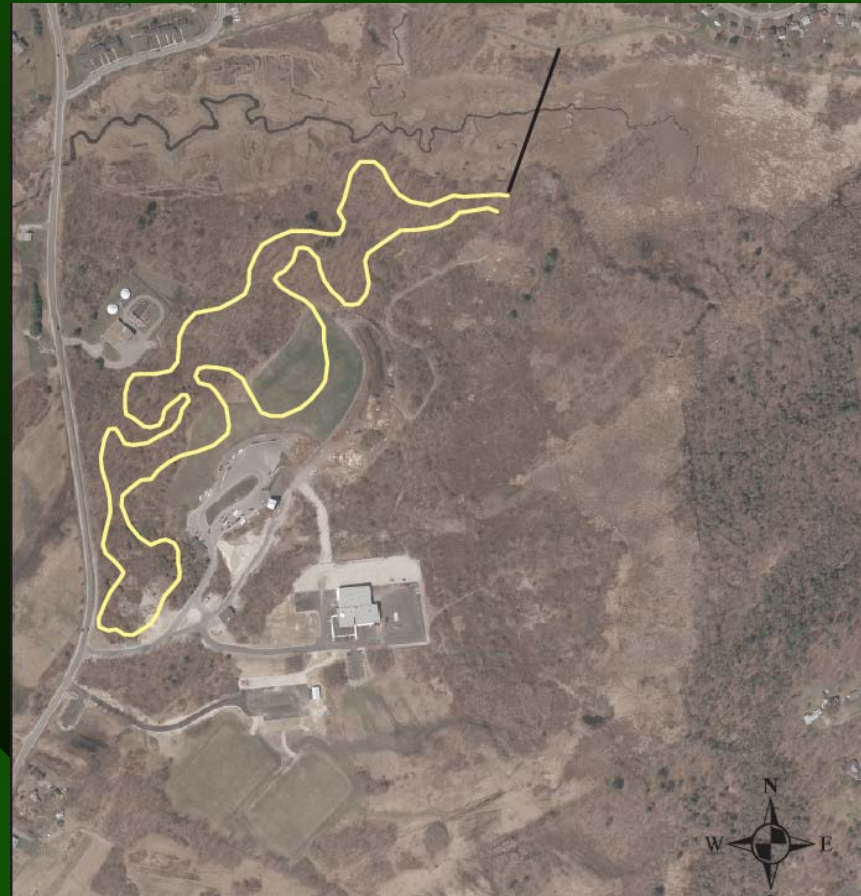


# Gull Crest Trail – Phase 1

## Section north of Transfer Station

### Phase 1 Plan

- Train volunteer crews using Lucas Tree, Inc professional
- Clear trail
- Grade trail with excavator adding drainage where necessary to prevent erosion
- Chip trail surface using cut brush and chips provided by Lucas Tree
- Add signage





# Gull Crest Trail – Phase 2

- Complete Loop



*Gull Crest Trail Committee - Developing a year round, multi-use trail for our community*

# Gull Crest Trail Update

## Request of Town Council

- Approve course flagged by John Morton
- Approve start of Phase 1
- Authorize Trails Committee to proceed on Town's behalf with DEP Application for Project Modification

**Trail Committee will assume all costs**

**Goal is to complete work by fall X-C season**