



TOWN OF CAPE ELIZABETH, MAINE
PROPERTY MAPS



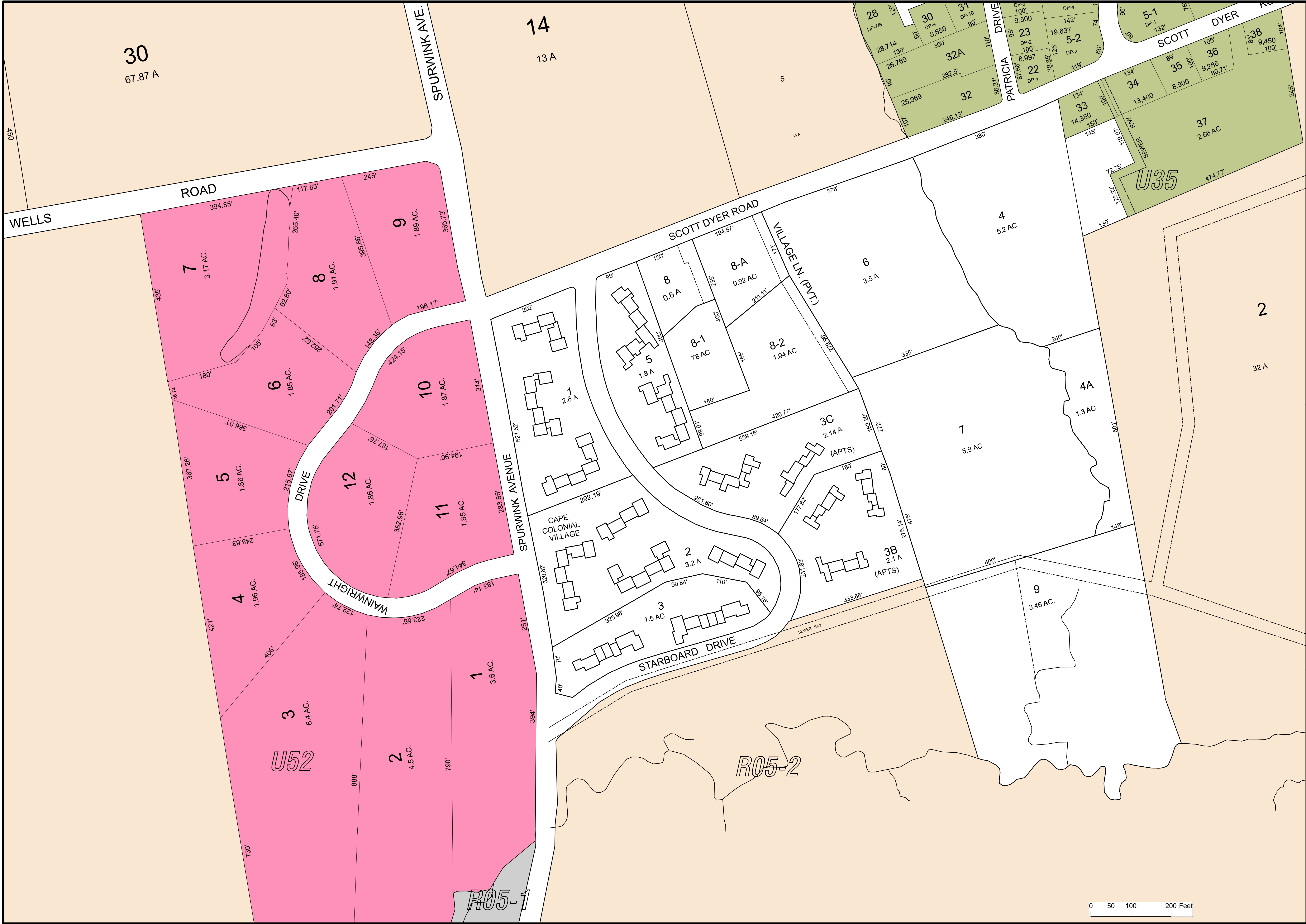
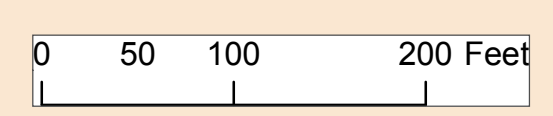
James H. Thomas
gisSolutions of Maine
Cumberland, Maine
jht@maine.rr.com

These maps are intended to be used for the purpose of Property Tax Assessments and should not be used for conveyances.
Revised to April 1

Scale: 1 inch = 100



2015
MAP: U45



30
67.87 A

14
13A

28 DP-7/8 28,714 130' 300' 26,769 60' 31 DP-10 8,550 80' 23 DP-3 9,500 100' 142' 5-2 DP-2 19,637 125' 119' 22 DP-1 8,997 78.85' 87.66' 32A 282.5' 246.13' 32 25,969 100' 33 14,350 153' 134' 34 13,400 89' 105' 35 8,900 100' 36 9,286 80.71' 37 2.66 AC 474.77' 104' 5-1 DP-1 132' 76' 38 9,450 100' 104'

ROAD

WELLS

SPURWINK AVE.

SCOTT DYER ROAD

VILLAGE LN. (PVT.)

U35

7
3.17 AC.

8
1.91 AC.

9
1.89 AC.

6
1.85 AC.

10
1.87 AC.

11
1.85 AC.

5
1.86 AC.

12
1.86 AC.

4
1.96 AC.

3
6.4 AC.

2
4.5 AC.

1
3.6 AC.

U52

R05-1

R05-2

2

32 A

7
5.9 AC

9
3.46 AC.

4A
1.3 AC

8-A
0.92 AC

8-1
.78 AC

8-2
1.94 AC

3C
2.14 A (APTS)

3B
2.1 A (APTS)

2
3.2 A

3
1.5 AC

1
2.6 A

5
1.8 A

8
0.6 A

6
3.5 A

4
5.2 AC

CAPE COLONIAL VILLAGE

STARBOARD DRIVE

SEWER RIN

SCOTT DYER

PATRICIA DRIVE

WAINWRIGHT DRIVE

SPURWINK AVENUE